

Final Net Revision

Second Term 2016 - 2017

Fifth Primary

A decorative horizontal band with a yellow-to-white gradient. It features a repeating pattern of stylized people sitting at desks with laptops, and large green arrows pointing to the right. The text "Microsoft Expression Web" is centered on the yellow part of the band.

Microsoft®
Expression® Web



Fifth Primary
Computer Net Revision
(Language Section)



Questions

A. Put (√) or (X):

1. The presentation should contain one slide at least. ()
2. There is one way to view the slides in the stage of design. ()
3. We can add a New Slide from File menu. ()
4. We can Copy a slide from Edit menu. ()
5. View sorter makes the use of slides easy. ()
6. It is preferred to prepare the music and images files while suit the presentation before beginning the preparation for the presentation. ()
7. We can make Slide Transition by mouse clicking but it can't be automatically after a certain period. ()
8. We must add a sound during Slide Transition. ()
9. We select Slide Transition from "Format" menu. ()
10. It is possible to add a sound of the slide animation from out the program. ()
11. We can remove an animation effect applied to an object later but, it can't be changed. ()
12. We can open the Custom Animation window by right click on the object. ()
13. It is hard to control the direction of the object animation. ()
14. We can't control the speed of the object animation. ()
15. The animations effects are related to sounds effects accompanying them. ()

Fifth Primary

Computer Net Revision (Language Section)



16. We can't connect several printers to one computer. ()
17. We can add notes to the slide in the design stage. ()
18. To print the slides outline, select Outline from Print window. ()
19. We can't print a slide in a separated page. ()
20. We can print several copies of the same slide. ()
21. It is preferred to make a good planning and preparation for the presentation before creating it on the computer. ()
22. It isn't necessary to present information through several ways or types. ()
23. Hyperlink can be used in the transition from a slide to another or from a presentation to another. ()
24. It isn't necessary to put a plan for the contents of each slide on papers. ()
25. To add a Hyperlink, use Action Buttons. ()
26. The website consists of one webpage or more. ()
27. The program Expression Web uses the main language for designing the internet pages and websites (HTML). ()
28. Expression Web doesn't use Internet Explorer. ()
29. Expression Web can use the images files but it can't use the video files. ()
30. We can modify the code which we type easily through Expression Web. ()
31. The created website from Templates all its pages are similar and harmonized. ()



Fifth Primary

Computer Net Revision (Language Section)



32. We can make a preview before applying the format of the website from Preview button. ()
33. To view the website templates in “New” window, we should first activate General at the left of the same window. ()
34. There is no difference between Save and Save As. ()
35. We can't change the images in the templates when selecting a format for designing a new website. ()
36. There is only one way for opening the Page Properties window. ()
37. “Modify Page Sizes” is used to control the width and length of the web page freely. ()
38. We click on “Browse” button to select the image that will be applied in the background. ()
39. Controlling the page direction and background is from the same tab in the Properties window. ()
40. We can control the page direction to be from right to left. ()
41. To control the text format from the dialogue box “Font”, use “File” menu. ()
42. We can control the text format by several ways. ()
43. Backspace button is used for deleting letters. ()
44. To control the text format, we should be sure that we are in Design. ()
45. We can't maximize the Font Size in the menu. ()
46. We can view the “Pictures” bar by right click on the Toolbar. ()
47. We can't change the picture rotation from the Toolbar. ()
48. To control the picture and cut a part of it, select the effect “Grayscale”. ()
49. When drawing a Hotspot rectangle on the picture, its shape appears clearly when viewing the picture. ()
50. We can add a picture from a file from Pictures Toolbar. ()



51. Hyperlink is a text or picture in the web page that can lead us to many locations at the same time. ()
52. We can add Hyperlink from “Hyperlink” option from “Format” menu. ()
53. The hyperlink can connect us with a location in the same page or site or stored file on the computer. ()
54. The hyperlink is useful when the web page is long and containing several contents. ()
55. We can add hyperlink through a part in the picture from Hotspot in the image. ()
56. We can delete the complete website by pointing to any file in the lists menu and press Delete button on the keyboard. ()
57. It is difficult to rename a website again. ()
58. There is no difference between Save and Save As. ()
59. To open “Site Settings” window, use Site menu. ()

B. Complete the following sentences:

- 1)makes the use of the slides easy and fast.
- 2) To delete a slide, select “Delete Slide” from.....
- 3) By.....menu we can find several ways of display.
- 4) To add a new slide, select “New Slide” from.....menu.
- 5)is used for change a slide from a location to another.



Fifth Primary
Computer Net Revision
(Language Section)



Complete the following steps for adding a Hyperlink for the moving to the next slide:

- 1) Select the slide which needs to add hyperlink to it.
- 2) Open menu.
- 3) Select.....
- 4) Click on..... icon from the buttons that will appear.
- 5) Click and draw the button in.....
- 6) Select from the menu that will appear (Hyperlink to).

Complete the following sentences from the brackets:

(Update – One Page Web Site – Multimedia – Hyperlink – color – Font)

- 1) We can transit from one web page or website to another or open a site by.....
- 2)means the texts, images, paints, video and sound files.
- 3) Using web pages makes siteseasier.
- 4) We can control the font size of the design page through the Toolbar or by opening “Format” menu and selecting.....
- 5) To create a new website containing one web page, select.....from “New” window.



Complete the following steps to create One Page Website:

- 1) Open "File" menu.
- 2) Point to.....
- 3) Select.....from the sub-menu that will appear.
- 4) Select "General" andfrom "New" window.
- 5) Select a location for saving the site on the computer by clicking on.....button.
- 6) Click onbutton to create the website.

Complete the following sentences from the brackets:

(Washout – Insert – brightness – Pictures - Hyperlink)

- 1) To control the picture properties, we use the.....bar.
- 2) To insert a picture, choose "Picture" frommenu.
- 3) Hotspot effect is similar to the.....effect.
- 4) We can control picture contrast and also.....
- 5) The optionmakes the picture in Grayscale or as a watermark.



C. Correct the underlined in the following sentences:

- 1) To add an entrance animation to the object, select **Exit** from the animation menu. (.....)
- 2) To play the show, select “View Show” from **Format** menu. (.....)
- 3) To start the object animation automatically after a certain period, select **With Previous** from Start menu. (.....)
- 4) We can display extra types of animations by selecting **Direction** in the Custom Animation window. (.....)
- 5) We can change the animation after selecting it by clicking on **Start** button in the Custom Animation window. (.....)

Correct the underlined in the following sentences:

- 1) Slides per page are used with **Slides** option. (.....)
- 2) To select the type of print, select **Print range**. (.....)
- 3) To print, select Print from **View** menu. (.....)
- 4) We can print certain slides from the presentation by typing the **titles** of those slides beside Slide. (.....)
- 5) Select the name of the printer we want to use from **Print what**. (.....)



Fifth Primary
Computer Net Revision
(Language Section)



Correct the underlined in the following sentences:

- 1) We can change the properties of the webpage via **Toolbox** window.
(.....)
- 2) **Page Editor Window** displays the site name and its contents from the internet pages.
(.....)
- 3) We can get information about the program through **Find** window.
(.....)
- 4) The control buttons appear in the **Information** bar. (.....)
- 5) We can open Find window from **View** menu. (.....)

Correct the underlined in the following sentences:

- 1) To create a new website, select “New” from “**Edit**” menu.
(.....)
- 2) **Preview** button in “New” window to select a location for saving the website on the computer.
(.....)
- 3) To save the changes on the website without changing its name or location, we use **Save As**.
(.....)
- 4) When creating a new website from Templates, we note that all the website pages are **not similar** in shape and format. (.....)
- 5) We can view the website before selecting it from “New” window and preview it from “**Options**”.
(.....)



D. Choose the correct answer from the brackets:

- 1) From the examples of the Browsers (HTML – Firefox -JavaScript)
- 2) Expression Web program uses (Photoshop – PHP - XML) program which is used for preparing images.
- 3) Expression Web is used for designing sites which contain images, sound and (Video – Code - JPG) files.
- 4) (Intellisense – GIF - Safari) property in Expression Web program supports the use of the language PHP, CSS and HTML.
- 5) From the types and extensions of the images which are used by Expression Web program (JPEG – Website - HTML).

Choose the correct answer from the brackets:

- 1) We can view the site's contents easily through (Title Bar – Folder List - Toolbar) window.
- 2) To open Find window, select “Find” from (Edit – Task Panes – File) menu.
- 3) We can control the properties of each item of the site's design items from (Find – Toolbox – Tag Properties).
- 4) (Toolbox – Find – Title Bar) contains a set of the tools which are used in designing a website.
- 5) We can change the properties of the webpage from (Edit –Properties - Folders) window.






Fifth Primary
Computer Net Revision
(Language Section)



Choose the correct answer from the brackets:

- 1) To control the page size, select Page Size from (File – Format - View) menu.
- 2) To open “Properties” window, select Background from (View – Format - File) menu.
- 3) We can open “Page Properties” window by right click on the background, then select (Font – Format – Page Properties) from the menu that will appear.
- 4) We can make the background image as a watermark from (Format – Make it watermark – Background Picture).
- 5) We can add a title for the page from “General” from (Title – Text – Color).

Choose the correct answer from the brackets:

- 1) We can view the Formatting Toolbar if it doesn't appear from (File – Format - View) menu.
- 2) We can check HTML codes when applying any effect from (Design – Code - Split) button which opens the code window.
- 3) We can control the Font Format from the Formatting Toolbar or from the dialogue box (Font – Format - View).
- 4) To make the Font bold, we use ( -  - ) icon from the Formatting Toolbar.
- 5) To create a new line in the Web Page, press (Enter – Backspace - Space) on the keyboard.



Choose the correct answer from the brackets:

- 1) To save the applied changes, select (Save As – Save - Exit) from Edit menu.
- 2) To close the web page without closing the program, select (Close – Exit – Close Site) from File menu.
- 3) We can change the site name from Web name in (General – Preview - Advanced)
- 4) We can delete the website by Delete button on the keyboard or Delete in (File – View - Edit) menu.

E. Give the suitable term:

- 1) A location on the internet network consisting of one or more web pages which are related together. (.....)
- 2) A text or picture in the web page when clicking on it, we move to another location in the same document or a related location. (.....)
- 3) A program which is used for displaying the different information in the internet websites. (.....)

F. Match:

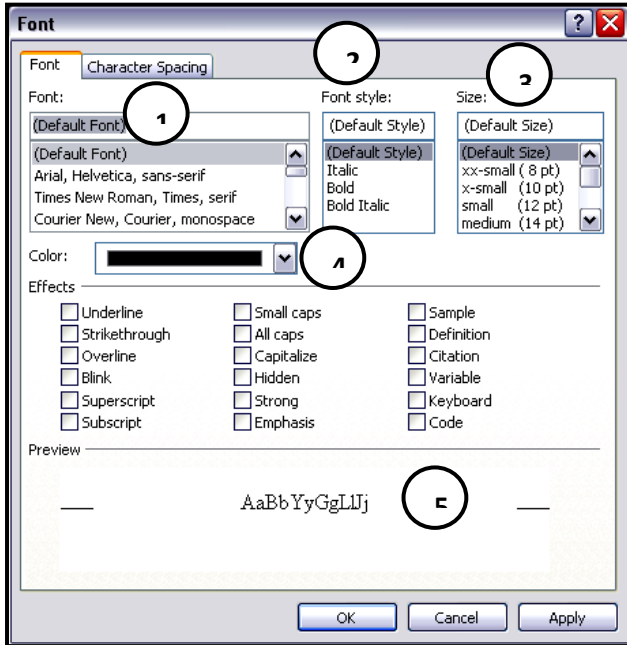
(A)		(B)	
1	On Mouse click	A	To control the speed of the slide animation
2	Automatically After	B	To select another sound accompanying the slides animation
3	Speed	C	To control the automatic display of the slide after a certain period
4	Other Sound	D	Move from a slide to another by the mouse.

(1,), (2,), (3,), (4,)



Model 1

A. What do the following numbers indicate in the next figure?



1.
2.
3.
4.
5.

B. Complete the following sentences from the brackets:

(Hyperlink – Code – Format – Preview – Multimedia)

1. To approach the code window of HTML language in Expression Web, we use.....button.
2. We can know the shape of the template from.....space.
3. We can move from a website to another by.....
4. Expression Web deals with.....files.
5. To format the texts in the webpage, select Font from.....menu.

C. Put (✓) or (✗):

1. Expression Web supports many languages as “XML”. ()
2. We can control the picture light from Crop. ()
3. We can delete an animation in the presentation from “Remove” button. ()
4. We can open the properties window of the web page from “File” menu only.()
5. The website is one or more web pages that are connected together. ()



Fifth Primary
Computer Net Revision
(Language Section)



Model 2

A. Correct the underlined in the following sentences:

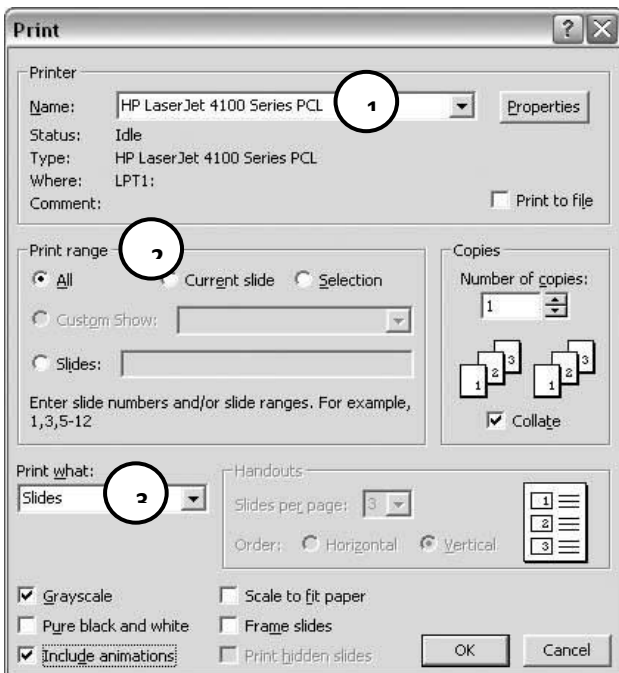
1. We add a hyperlink in the web page from File menu. (.....)
2. We can modify the slides contents of the presentation in Sorter View. (.....)
3. To save changes of the website, click Save As. (.....)
4. We can close the website from Close Site from Edit menu. (.....)
5. PowerPoint uses HTML files. (.....)

B. Complete the following sentences from brackets:

(Formatting – Browser – Edit – Hotspot – Print what)

1.program is used in displaying the information in the websites.
2. To print slide notes, select Notes from.....part in Print window.
3. We can format the text in the site from.....bar.
4.is used as a hyperlink.
5. To delete a site, use Delete from.....menu after selecting site main folder.

C. What do the following numbers indicate in the next figure?



1.
2.
3.



Fifth Primary
Computer Net Revision
(Language Section)



Model 3

A. Match:

(A)		(B)	
1	Edit menu	A	Open Site Settings
2	File menu	B	To select Save for saving changes
3	Insert menu	C	View Find window
4	Task Panes	D	Delete the site
5	Site menu	E	Insert a picture

(1,), (2,), (3,), (4,), (5,)

B. Complete the following sentences from brackets:

**(Site Settings – Current Slide – Close Site – One Page Website – Print
Save As)**

1. We can change the website name from.....
2.is used for printing the current page only in the presentation.
3. To save a website in a different name and in a different location, select.....
4. To create one page website, select.....
5. To close the website, select.....from “File” menu.

C. Put (✓) or (✗):

1. We can't print more than one copy of the slide. ()
2. We can format the text from “Color” dialogue box. ()
3. We can name the website with another name. ()
4. The computer can be connected to many printers. ()
5. The web pages should be in harmony with each others. ()

Answer the following questions :-

[each question 2.5 marks]

(1) Complete the following statements with a suitable word: -

(Delete Slide - All Programs - Paste - Insert - Slide Transition)

- 1 - We select from (Edit) menu to put the slide after they are copied .
- 2 - We select to remove a slide .
- 3 - We select "New Slide" from menu to add a new slide .
- 4 - We select Microsoft Expression Web from menu to open it .
- 5 - We select from Slide Show to add a movement to the slide .

(2) Rearrange the following orders into the web page :-

 - <Body> - </Html> - <Body> - </Html>

(3) put (√) or (×) :-

- 1 - We can not add a movement to a picture into the slide . ()
- 2 - You can remove a slide by clicking on Delete from the keyboard . ()
- 3 - We can not insert a sound accompanying the slides during the presentation . ()
- 4 - When you close PowerPoint a confirmation message does not appear,
it means you did not save the file . ()
- 5 - Menus are to display items in an order view in the form of following points . ()

(4) Match :-

(A)

(B)

- | | |
|--------------|--|
| 1 - Entrance | a - is used to make the writing in the middle of the page . |
| 2 - Font | b - determines the movement for the enter of the object into the slide presentation . |
| 3 - HTML | c - is used after the entry of the object for the slide to add a movement confirmation . |
| 4 - Center | d - the language is used for web pages . |
| 5 - Emphasis | e - is used to control the coordination of font writing that appears in the data page . |

" سؤال المتخلفين عن الفصل الدراسي الأول "

[10 marks]

- put (√) or (×) :-

- 1 - We use (Help & Support) for helping in a certain topic . ()
- 2 - We select "New" from "File" menu to create "Blank Presentation" . ()
- 3 - Task bar is one of the components of the desktop . ()
- 4 - Google, Yahoo isn't be used in search for sites . ()

Answer the following questions :-

[Each question 2.5 marks]

(1) Put (√) or (×) :-

- 1- The presentation should contain one slide at least .
- 2- You can move from one slide to another by mouse click but we can't move automatically .
- 3- When you add an animation effect to an item, you can delete it afterwards, but you can't replace it .
- 4- You can't connect more than one printer to only one computer .
- 5- You can print more than one copy from the same slide .

(2) Choose the correct answer :-

- 1- You can remove a slide from the key (Delete – Home – Ctrl) from the keyboard .
- 2- The choice Exit defines the animation style of (Exit – Copy & paste – Entrance) .
- 3- To print something, you open the Menu (Edit – File – Insert) .
- 4- You choose the form of the new slide through the window (Slide Layout – Details – Slides Sorter) .
- 5- You can add notes to the slide only in the stage of (Design – Presentation – Slides Copy) .

(3) Read and match :-

- | | |
|---|--------------------|
| 1- To repeat a slide in another place, you use | a- Slides Sorter . |
| 2- The way of automatic presentation shown at the beginning of the program is | b- Copy . |
| 3- To write some information about the presentation, you write in | c- New Slide . |
| 4- It is easy to deal with slides, through | d- Notes Area . |
| 5- To create a new slide, you click | e- Normal View . |

(4) Arrange the steps of creating a website from one page website :-

- 1- Click Browse to choose the save place or leave it in its default position of save then OK .
- 2- A box is shown to choose from it the Tab Website .
- 3- You choose New from File Menu .
- 4- Open File Menu .
- 5- A window is shown . You choose General then One Page Website .

" Questions for first term "

– Complete the following sentence using the words from the list :-

[10 marks]

(Desktop – Internet – Start Menu – Multimedia – PowerPoint)

- 1- enables you to access all the programs in the computer .
- 2- connects thousands of computers and networks all over the world .
- 3- refers to the area which occupies most of the screen .
- 4- program contains ready-made templates .
- 5- PowerPoint program is one of the programs of

امتحان النقل من الصف الخامس الابتدائي (لغات) للعام الدراسي ١٤٣٥/١٤٣٦ هـ - ٢٠١٤/٢٠١٥ م
الفصل الدراسي الثاني الحاسب الآلي الزمن:- ساعة ونصف

من السؤال الأول إلى الرابع درجتان ونصف لكل سؤال

Q1 : complete the sentences with appropriate word

(File – Tool box – Insert – Delete – Slide show)

1. We can add slide by using menu
1. "Custom Animation" there in menu
2. We can print slide by using menu
3. Design tools in Expression Web there in
4. To remove a slide, select it then press

Q2 : choose the correct Answer between bracts

1. Main windows in Expression Web contain (tools box – Properties box – all)
2. PowerPoint used in building (Spread Sheet – presentation – web Page)
3. We can Slide in presentation (add – delete – all)
4. Expression web used in (web page – spread sheet – engineering drawing)
5. We can add Word Art by using menu (Format – Insert – View)

Q3 : Put (√) or (X)

1. Tools box is part of main window in Expression ()
2. We can't add motion to each object in slide ()
3. We can make motion between slides ()
4. Expression Web have templates we can used it in designing ()
5. We can't resizing the added picture in PowerPoint slide ()

Q4 : Mache from group (A) with group (B)

A		B	
1	We can add action to objects	1	Web pages
2	Web site contain some of	2	Edit menu
3	We can print slide by using	3	Custom Animation menu
4	Expression web	4	Insert menu
5	We can add sound to slide by	5	File menu
		6	Used in designing web page

Question for students retarded: complete the sentences with appropriate word

1. When we delete file, it move to
2. We can know time by looking to
3. To convert between Arabic and English use Alt +
4. The programs loading in
5. Responsible for organizing and storing data to the computer is

عشر درجات

Good luck



Answers

A. Put (√) or (X):

1. The presentation should contain one slide at least. (√)
2. There is one way to view the slides in the stage of design. (×)
3. We can add a New Slide from File menu. (×)
4. We can Copy a slide from Edit menu. (√)
5. View sorter makes the use of slides easy. (√)
6. It is preferred to prepare the music and images files while suit the presentation before beginning the preparation for the presentation. (√)
7. We can make Slide Transition by mouse clicking but it can't be automatically after a certain period. (×)
8. We must add a sound during Slide Transition. (×)
9. We select Slide Transition from "Format" menu. (×)
10. It is possible to add a sound of the slide animation from out the program. (√)
11. We can remove an animation effect applied to an object later but, it can't be changed. (×)
12. We can open the Custom Animation window by right click on the object. (√)
13. It is hard to control the direction of the object animation. (×)
14. We can't control the speed of the object animation. (×)
15. The animations effects are related to sounds effects accompanying them. (×)

Fifth Primary

Computer Net Revision (Language Section)



16. We can't connect several printers to one computer. (×)
17. We can add notes to the slide in the design stage. (√)
18. To print the slides outline, select Outline from Print window. (√)
19. We can't print a slide in a separated page. (×)
20. We can print several copies of the same slide. (√)
21. It is preferred to make a good planning and preparation for the presentation before creating it on the computer. (√)
22. It isn't necessary to present information through several ways or types. (×)
23. Hyperlink can be used in the transition from a slide to another or from a presentation to another. (√)
24. It isn't necessary to put a plan for the contents of each slide on papers. (×)
25. To add a Hyperlink, use Action Buttons. (√)
26. The website consists of one webpage or more. (√)
27. The program Expression Web uses the main language for designing the internet pages and websites (HTML). (√)
28. Expression Web doesn't use Internet Explorer. (×)
29. Expression Web can use the images files but it can't use the video files. (×)
30. We can modify the code which we type easily through Expression Web. (√)
31. The created website from Templates all its pages are similar and harmonized. (√)



Fifth Primary

Computer Net Revision (Language Section)



32. We can make a preview before applying the format of the website from Preview button. (×)
33. To view the website templates in “New” window, we should first activate General at the left of the same window. (×)
34. There is no difference between Save and Save As. (×)
35. We can't change the images in the templates when selecting a format for designing a new website. (×)
36. There is only one way for opening the Page Properties window. (×)
37. “Modify Page Sizes” is used to control the width and length of the web page freely. (√)
38. We click on “Browse” button to select the image that will be applied in the background. (√)
39. Controlling the page direction and background is from the same tab in the Properties window. (×)
40. We can control the page direction to be from right to left. (√)
41. To control the text format from the dialogue box “Font”, use “File” menu. (×)
42. We can control the text format by several ways. (√)
43. Backspace button is used for deleting letters. (√)
44. To control the text format, we should be sure that we are in Design. (√)
45. We can't maximize the Font Size in the menu. (×)
46. We can view the “Pictures” bar by right click on the Toolbar. (√)
47. We can't change the picture rotation from the Toolbar. (×)
48. To control the picture and cut a part of it, select the effect “Grayscale”. (×)
49. When drawing a Hotspot rectangle on the picture, its shape appears clearly when viewing the picture. (×)
50. We can add a picture from a file from Pictures Toolbar. (√)



Fifth Primary

Computer Net Revision (Language Section)



51. Hyperlink is a text or picture in the web page that can lead us to many locations at the same time. (×)
52. We can add Hyperlink from “Hyperlink” option from “Format” menu. (×)
53. The hyperlink can connect us with a location in the same page or site or stored file on the computer. (√)
54. The hyperlink is useful when the web page is long and containing several contents. (√)
55. We can add hyperlink through a part in the picture from Hotspot in the image. (√)
56. We can delete the complete website by pointing to any file in the lists menu and press Delete button on the keyboard. (×)
57. It is difficult to rename a website again. (×)
58. There is no difference between Save and Save As. (×)
59. To open “Site Settings” window, use Site menu. (√)

B. Complete the following sentences:

- 1) **Slide Sorter View** makes the use of the slides easy and fast.
- 2) To delete a slide, select “Delete Slide” from **Edit**.
- 3) By **View** menu we can find several ways of display.
- 4) To add a new slide, select “New Slide” from **Insert** menu.
- 5) **Cut** is used for change a slide from a location to another.



Fifth Primary
Computer Net Revision
(Language Section)

Complete the following steps for adding a Hyperlink for the moving to the next slide:

- 1) Select the slide which needs to add hyperlink to it.
- 2) Open **Slide Show** menu.
- 3) Select **Action Buttons**.
- 4) Click on **Next** icon from the buttons that will appear.
- 5) Click and draw the button in **desired location in the slide**.
- 6) Select **Next Slide** from the menu that will appear (Hyperlink to).

Complete the following sentences from the brackets:

(Update – One Page Web Site – Multimedia – Hyperlink – color – Font)

- 1) We can transit from one web page or website to another or open a site by **Hyperlink**.
- 2) **Multimedia** means the texts, images, paints, video and sound files.
- 3) Using web pages makes sites **update** easier.
- 4) We can control the font size of the design page through the Toolbar or by opening “Format” menu and selecting **Font**.
- 5) To create a new website containing one web page, select **One Page Web Site** from “New” window.



Fifth Primary
Computer Net Revision
(Language Section)



Complete the following steps to create One Page Website:

- 1) Open “File” menu.
- 2) Point to **New**.
- 3) Select **Web Site** from the sub-menu that will appear.
- 4) Select “General” and **One Page Web Site** from “New” window.
- 5) Select a location for saving the site on the computer by clicking on **Browse** button.
- 6) Click on **OK** button to create the website.

Complete the following sentences from the brackets:

(Washout – Insert – brightness – Pictures - Hyperlink)

- 1) To control the picture properties, we use the **Pictures** bar.
- 2) To insert a picture, choose “Picture” from **Insert** menu.
- 3) Hotspot effect is similar to the **Hyperlink** effect.
- 4) We can control picture contrast and also **brightness**.
- 5) The option **Washout** makes the picture in Grayscale or as a watermark.



Fifth Primary
Computer Net Revision
(Language Section)



C. Correct the underlined in the following sentences:

- 1) To add an entrance animation to the object, select Exit from the animation menu. (Entrance)
- 2) To play the show, select “View Show” from Format menu. (Slide Show)
- 3) To start the object animation automatically after a certain period, select With Previous from Start menu. (After Previous)
- 4) We can display extra types of animations by selecting Direction in the Custom Animation window. (More Effects)
- 5) We can change the animation after selecting it by clicking on Start button in the Custom Animation window. (Change)

Correct the underlined in the following sentences:

- 1) Slides per page are used with Slides option. (Handouts)
- 2) To select the type of print, select Print range. (Print what)
- 3) To print, select Print from View menu. (File)
- 4) We can print certain slides from the presentation by typing the titles of those slides beside Slide. (numbers)
- 5) Select the name of the printer we want to use from Print what. (Name)



Fifth Primary
Computer Net Revision
(Language Section)

Correct the underlined in the following sentences:

- 1) We can change the properties of the webpage via Toolbox window.
(Page Settings)
- 2) Page Editor Window displays the site name and its contents from the internet pages. (Folder List)
- 3) We can get information about the program through Find window. (Help)
- 4) The control buttons appear in the Information bar. (Title)
- 5) We can open Find window from View menu. (Edit)

Correct the underlined in the following sentences:

- 1) To create a new website, select “New” from “Edit” menu. (File)
- 2) Preview button in “New” window to select a location for saving the website on the computer. (Browse)
- 3) To save the changes on the website without changing its name or location, we use Save As. (Save)
- 4) When creating a new website from Templates, we note that all the website pages are not similar in shape and format. (similar - harmonized)
- 5) We can view the website before selecting it from “New” window and preview it from “Options”. (Preview)



D. Choose the correct answer from the brackets:

- 1) From the examples of the Browsers (HTML – **Firefox** -JavaScript)
- 2) Expression Web program uses (**Photoshop** – PHP - XML) program which is used for preparing images.
- 3) Expression Web is used for designing sites which contain images, sound and (**Video** – Code - JPG) files.
- 4) (**Intellisense** – GIF - Safari) property in Expression Web program supports the use of the language PHP, CSS and HTML.
- 5) From the types and extensions of the images which are used by Expression Web program (**JPEG** – Website - HTML).

Choose the correct answer from the brackets:

- 1) We can view the site's contents easily through (Title Bar – **Folder List** - Toolbar) window.
- 2) To open Find window, select "Find" from (**Edit** – Task Panes – File) menu.
- 3) We can control the properties of each item of the site's design items from (Find – Toolbox – **Tag Properties**).
- 4) (**Toolbox** – Find – Title Bar) contains a set of the tools which are used in designing a website.
- 5) We can change the properties of the webpage from (Edit – **Properties** - Folders) window.






Fifth Primary
Computer Net Revision
(Language Section)



Choose the correct answer from the brackets:

- 1) To control the page size, select Page Size from (File – Format - **View**) menu.
- 2) To open “Properties” window, select Background from (View – Format - **File**) menu.
- 3) We can open “Page Properties” window by right click on the background, then select (Font – Format – **Page Properties**) from the menu that will appear.
- 4) We can make the background image as a watermark from (Format – **Make it watermark** – Background Picture).
- 5) We can add a title for the page from “General” from (**Title** – Text – Color).

Choose the correct answer from the brackets:

- 1) We can view the Formatting Toolbar if it doesn't appear from (File – Format - **View**) menu.
- 2) We can check HTML codes when applying any effect from (Design – **Code** - Split) button which opens the code window.
- 3) We can control the Font Format from the Formatting Toolbar or from the dialogue box (**Font** – Format - View).
- 4) To make the Font bold, we use ( -  - ) icon from the Formatting Toolbar.
- 5) To create a new line in the Web Page, press (**Enter** – Backspace - Space) on the keyboard.



Fifth Primary
Computer Net Revision
(Language Section)



Choose the correct answer from the brackets:

- 1) To save the applied changes, select (Save As – **Save** - Exit) from Edit menu.
- 2) To close the web page without closing the program, select (Close – Exit – **Close Site**) from File menu.
- 3) We can change the site name from Web name in (**General** – Preview - Advanced)
- 4) We can delete the website by Delete button on the keyboard or Delete in (File – View - **Edit**) menu.

G. Give the suitable term:

- 1) A location on the internet network consisting of one or more web pages which are related together. (**Web Site**)
- 2) A text or picture in the web page when clicking on it, we move to another location in the same document or a related location. (**Hyperlink**)
- 3) A program which is used for displaying the different information in the internet websites. (**Internet Browser**)

E. Match:

(A)		(B)	
1	On Mouse click	A	To control the speed of the slide animation
2	Automatically After	B	To select another sound accompanying the slides animation
3	Speed	C	To control the automatic display of the slide after a certain period
4	Other Sound	D	Move from a slide to another by the mouse.

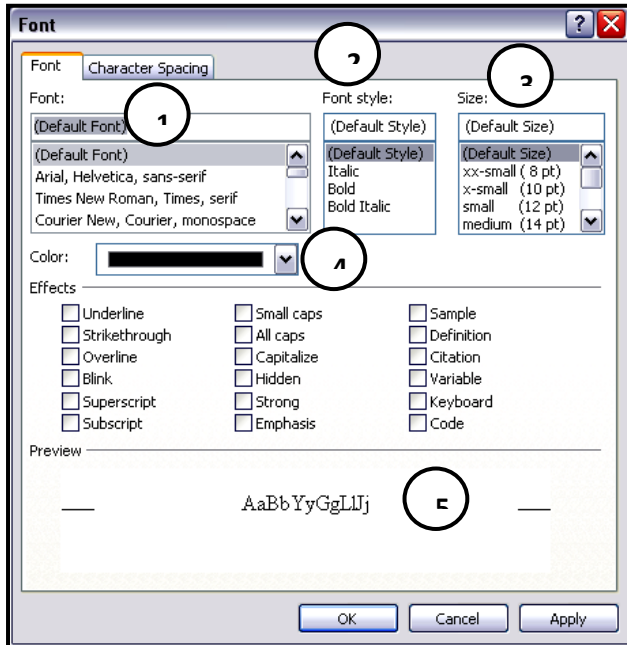
(1, **D**) , (2, **C**) , (3, **A**) , (4, **B**)



Fifth Primary
Computer Net Revision
(Language Section)

Model 1

A. What do the following numbers indicate in the next figure?



1. **Font Type.**
2. **Font Style.**
3. **Font Size.**
4. **Font Color.**
5. **Preview.**

B. Complete the following sentences from the brackets:

(Hyperlink – Code – Format – Preview – Multimedia)

1. To approach the code window of HTML language in Expression Web, we use **Code** button.
2. We can know the shape of the template from **Preview** space.
3. We can move from a website to another by **Hyperlink**.
4. Expression Web deals with **Multimedia** files.
5. To format the texts in the webpage, select Font from **Format** menu.

C. Put (✓) or (✗):

1. Expression Web supports many languages as “XML”. (✓)
2. We can control the picture light from Crop. (✗)
3. We can delete an animation in the presentation from “Remove” button. (✓)
4. We can open the properties window of the web page from “File” menu only. (✗)
5. The website is one or more web pages that are connected together. (✓)



Fifth Primary
Computer Net Revision
(Language Section)



Model 2

A. Correct the underlined in the following sentences:

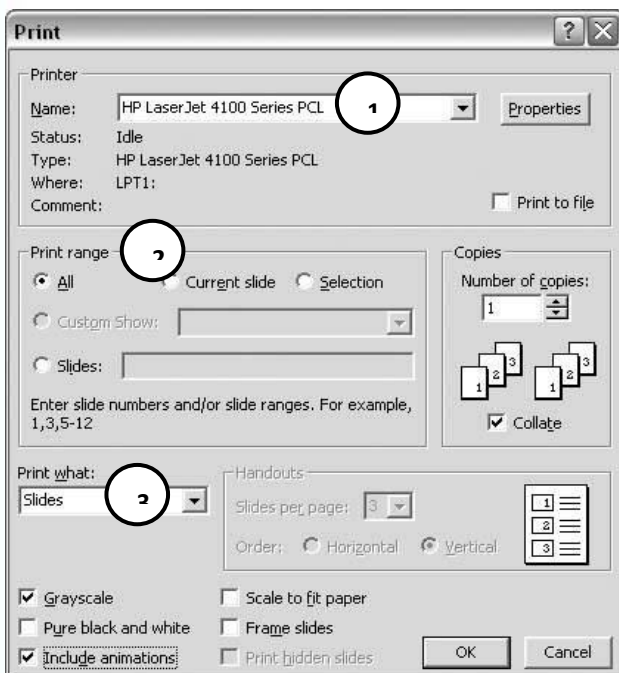
1. We add a hyperlink in the web page from File menu. (**Insert**)
2. We can modify the slides contents of the presentation in Sorter View. (**Normal View**)
3. To save changes of the website, click Save As. (**Save**)
4. We can close the website from Close Site from Edit menu. (**File**)
5. PowerPoint uses HTML files. (**Expression Web**)

B. Complete the following sentences from brackets:

(**Formatting – Browser – Edit – Hotspot – Print what**)

1. **Browser** program is used in displaying the information in the websites.
2. To print slide notes, select Notes from **Print what** part in Print window.
3. We can format the text in the site from **Formatting** bar.
4. **Hotspot** is used as a hyperlink.
5. To delete a site, use Delete from **Edit** menu after selecting site main folder.

C. What do the following numbers indicate in the next figure?



1. **Printer Name.**
2. **Print Range (The part which needs to be printed).**
3. **Print What (Select the printing item).**



Fifth Primary
Computer Net Revision
(Language Section)



Model 3

A. Match:

(A)		(B)	
1	Edit menu	A	Open Site Settings
2	File menu	B	To select Save for saving changes
3	Insert menu	C	View Find window
4	Task Panes	D	Delete the site
5	Site menu	E	Insert a picture

(1, **D**), (2, **B**), (3, **E**), (4, **C**), (5, **A**)

B. Complete the following sentences from brackets:

(Site Settings – Current Slide – Close Site – One Page Website – Print
Save As)

1. We can change the website name from **Site Settings**.
2. **Current Slide** is used for printing the current page only in the presentation.
3. To save a website in a different name and in a different location, select **Save As**.
4. To create one page website, select **One Page Website**.
5. To close the website, select **Close Site** from “File” menu.

C. Put (✓) or (✗):

1. We can't print more than one copy of the slide. (✗)
2. We can format the text from “Color” dialogue box. (✗)
3. We can name the website with another name. (✓)
4. The computer can be connected to many printers. (✓)
5. The web pages should be in harmony with each others. (✓)

Answer the following questions :-

[each question 2.5 marks]

(1) Complete the following statements with a suitable word :-

(Delete Slide - All Programs - Paste - Insert - Slide Transition)

- 1 - We select Paste from (Edit) menu to put the slide after they are copied .
- 2 - We select Delete Slide to remove a slide .
- 3 - We select "New Slide" from Insert menu to add a new slide .
- 4 - We select Microsoft Expression Web from All Programs menu to open it .
- 5 - We select Slide Transition from Slide Show to add a movement to the slide .

(2) Rearrange the following orders into the web page :-

③
 - ② <Body> - ⑤ </Html> - ④ <Body> - ① </Html>

(3) put (√) or (×) :-

- 1 - We can not add a movement to a picture into the slide . (X)
- 2 - You can remove a slide by clicking on Delete from the keyboard . (✓)
- 3 - We can not insert a sound accompanying the slides during the presentation . (X)
- 4 - When you close PowerPoint a confirmation message does not appear,
it means you did not save the file . (X)
- 5 - Menus are to display items in an order view in the form of following points . (✓)

(4) Match :-

(A)

(B)

- | | |
|-----------------------|---|
| 1 - Entrance <u>b</u> | a - is used to make the writing in the middle of the page . |
| 2 - Font <u>e</u> | b - determines the movement for the <u>enter</u> of the object into the slide presentation . |
| 3 - HTML <u>d</u> | c - is used <u>after the entry</u> of the object for the slide to add a movement confirmation . |
| 4 - Center <u>a</u> | d - the language is used for web pages . |
| 5 - Emphasis <u>c</u> | e - is used to control the coordination of font writing that appears in the data page . |

" سؤال المتخلفين عن الفصل الدراسي الأول "

[10 marks]

- put (√) or (×) :-

- 1 - We use (Help & Support) for helping in a certain topic . ()
- 2 - We select "New" from "File" menu to create "Blank Presentation" . ()
- 3 - Task bar is one of the components of the desktop . ()
- 4 - Google, Yahoo isn't be used in search for sites . ()

Answer the following questions :-

[Each question 2.5 marks]

(1) Put (√) or (×) :-

- 1- The presentation should contain one slide at least . ✓
- 2- You can move from one slide to another by mouse click but we can't move automatically . X
- 3- When you add an animation effect to an item, you can delete it afterwards, but you can't replace it . X
- 4- You can't connect more than one printer to only one computer . X
- 5- You can print more than one copy from the same slide . ✓

(2) Choose the correct answer :-

- 1- You can remove a slide from the key (Delete – Home – Ctrl) from the keyboard .
- 2- The choice Exit defines the animation style of (Exit – Copy & paste – Entrance) .
- 3- To print something, you open the Menu (Edit – File – Insert) .
- 4- You choose the form of the new slide through the window (Slide Layout – Details – Slides Sorter) .
- 5- You can add notes to the slide only in the stage of (Design – Presentation – Slides Copy) .

(3) Read and match :-

- | | |
|--|--------------------|
| 1- To repeat a slide in another place, you use b | a- Slides Sorter . |
| 2- The way of automatic presentation shown at the beginning of the program is e | b- Copy . |
| 3- To write some information about the presentation, you write in d | c- New Slide . |
| 4- It is easy to deal with slides, through a | d- Notes Area . |
| 5- To create a new slide, you click c | e- Normal View . |

(4) Arrange the steps of creating a website from one page website :-

- 1- Click Browse to choose the save place or leave it in its default position of save then OK . (5)
- 2- A box is shown to choose from it the Tab Website . (3)
- 3- You choose New from File Menu . (2)
- 4- Open File Menu . (1)
- 5- A window is shown . You choose General then One Page Website (4)

" Questions for first term "

– Complete the following sentence using the words from the list :-

[10 marks]

(Desktop – Internet – Start Menu – Multimedia – PowerPoint)

- 1- enables you to access all the programs in the computer .
- 2- connects thousands of computers and networks all over the world .
- 3- refers to the area which occupies most of the screen .
- 4- program contains ready-made templates .
- 5- PowerPoint program is one of the programs of

امتحان النقل من الصف الخامس الابتدائي (لغات) للعام الدراسي ١٤٣٦/١٤٣٥ هـ - ٢٠١٤/٢٠١٥ م
الفصل الدراسي الثاني الحاسب الآلي الزمن: - ساعة ونصف

من السؤال الأول إلى الرابع درجتان ونصف لكل سؤال

Q1 : complete the sentences with appropriate word

(File – Tool box – Insert – Delete – Slide show)

1. We can add slide by using .. Insert ... menu
1. "Custom Animation" there in Slide Show menu
2. We can print slide by using .. File menu
3. Design tools in Expression Web there in ... Toolbox
4. To remove a slide, select it then press .. Delete

Q2 : choose the correct Answer between brackets

1. Main windows in Expression Web contain (tools box – Properties box – all)
2. PowerPoint used in building (Spread Sheet – presentation – web Page)
3. We can Slide in presentation (add – delete – all)
4. Expression web used in (web page – spread sheet – engineering drawing)
5. We can add Word Art by using menu (Format – Insert – View)

Q3 : Put (√) or (X)

1. Tools box is part of main window in Expression (√)
2. We can't add motion to each object in slide (X)
3. We can make motion between slides (√)
4. Expression Web have templates we can used it in designing (√)
5. We can't resizing the added picture in PowerPoint slide (X)

Q4 : Match from group (A) with group (B)

A		B	
1	We can add action to objects <u>3</u>	1	Web pages
2	Web site contain some of <u>1</u>	2	Edit menu
3	We can print slide by using <u>5</u>	3	Custom Animation menu
4	Expression web <u>6</u>	4	Insert menu
5	We can add sound to slide by <u>4</u>	5	File menu
		6	Used in designing web page

Question for students retarded: complete the sentences with appropriate word

1. When we delete file, it move to
2. We can know time by looking to
3. To convert between Arabic and English use Alt +
4. The programs loading in
5. Responsible for organizing and storing data to the computer is

عشر درجات

Good luck