



Science

(Practical sheets)



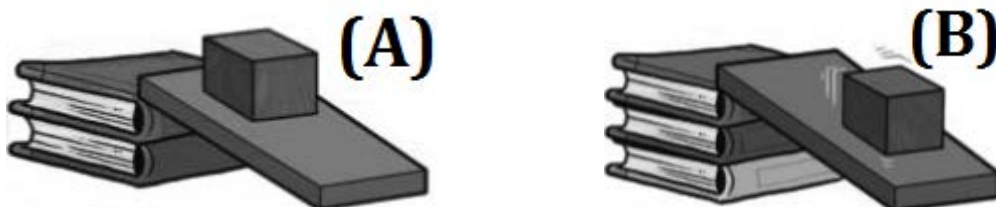
Grade 5

2nd Term - Year 2013/2014

Name: _____

Class: Junior 5 Blue

Experiment (1)



- **Observation:**

The cube in figure (A) doesn't slide down, while the cube in (B) slides down.

- **Conclusion:**

- There is a force in the opposite direction of movement called friction.
- When the friction force is larger than the movement force, the body doesn't move and vice versa.

Experiment (2)

- **Steps:**

- Throw a rubber ball or a marble one on:
A wooden surface - A ceramic surface.

- **Observation:**

- The ball moves on the 2 surfaces for a while than it stops due to **friction**.
- The ball moves on the ceramic surface for a **longer** distance than on the wooden surface.

- **Conclusion:**

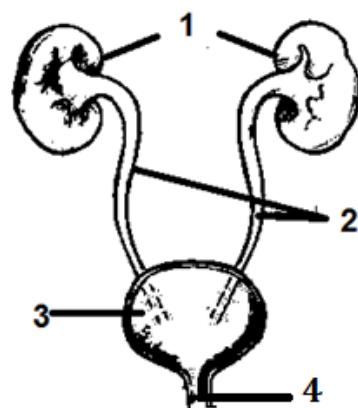
The friction force depends on the type of the surface material, where it **increases** on rough surfaces and **decreases** on smooth surfaces.

Diagram (3)

a. The figure represents the **urinary system**

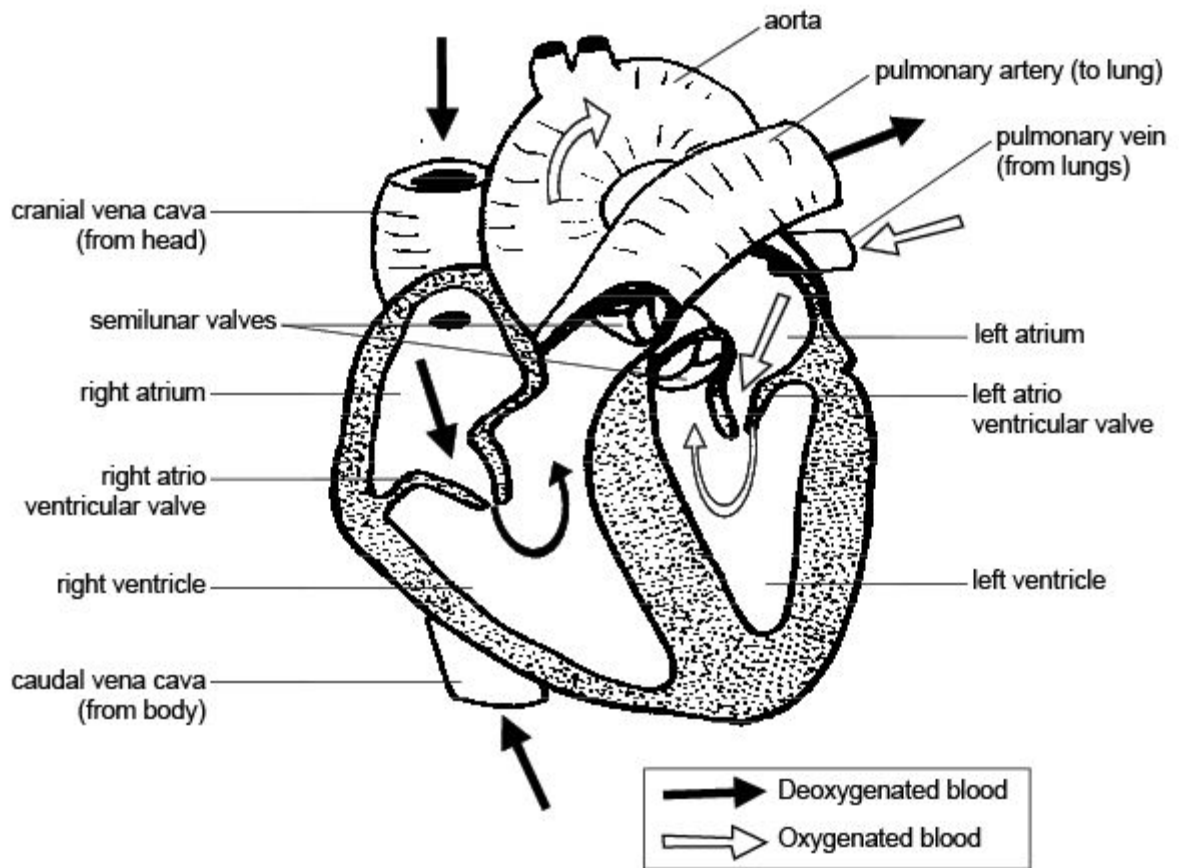
b. **Label the figure:**

- 1- Kidneys
- 2- Ureters
- 3- Urinary Bladder
- 4- Urethra



c. The function of: **Revise their function from your book p. 44 - 45**

Diagram (4)



a. The figure represents the Heart

b. Label the figure:

c. Follow the path of the Deoxygenated and oxygenated blood:

d. Answer the following:

1. The function of wall between two sides of the heart is:

to separate them to prevent mixing of blood in the 2 sides.

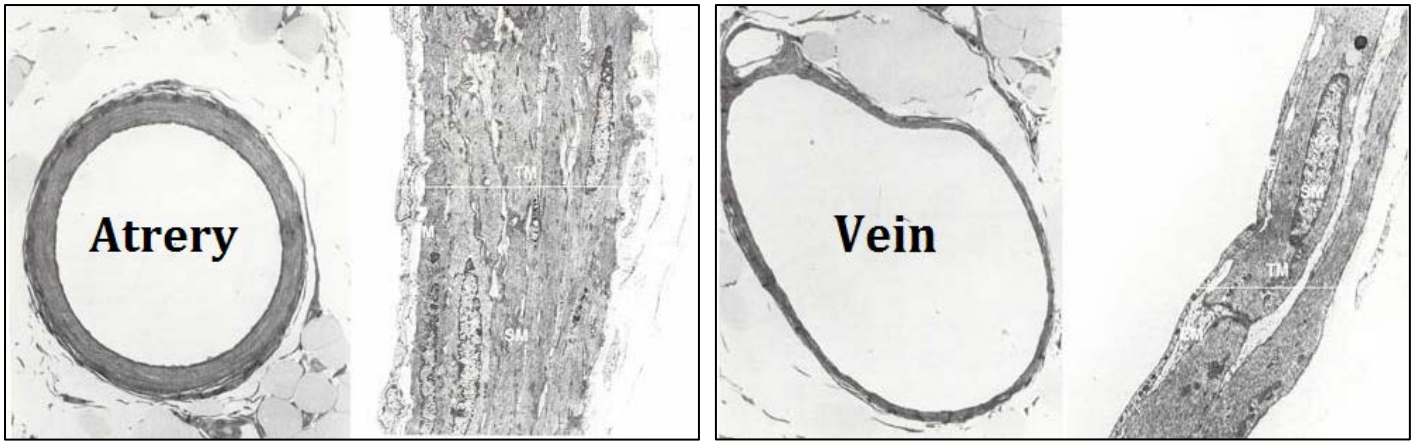
2. The function of the valves is:

to allow the blood to pass from atria to ventricles

3. The wall of the left ventricle is thicker than that of the right one because:

it pushes the blood for all the body cells (longer distance)

Microscopic Slide (5)



Points of comparison	Arteries	Veins
Thickness	Thick-walled vessels	Thin-walled vessels
Function	Carry the blood from <u>heart</u> to <u>body cells</u>	Carry the blood from <u>body cells</u> to <u>heart</u>
Type of blood	<u>Oxygenated</u> blood Except the <u>pulmonary artery</u>	<u>Deoxygenated</u> blood Except the <u>pulmonary vein</u>